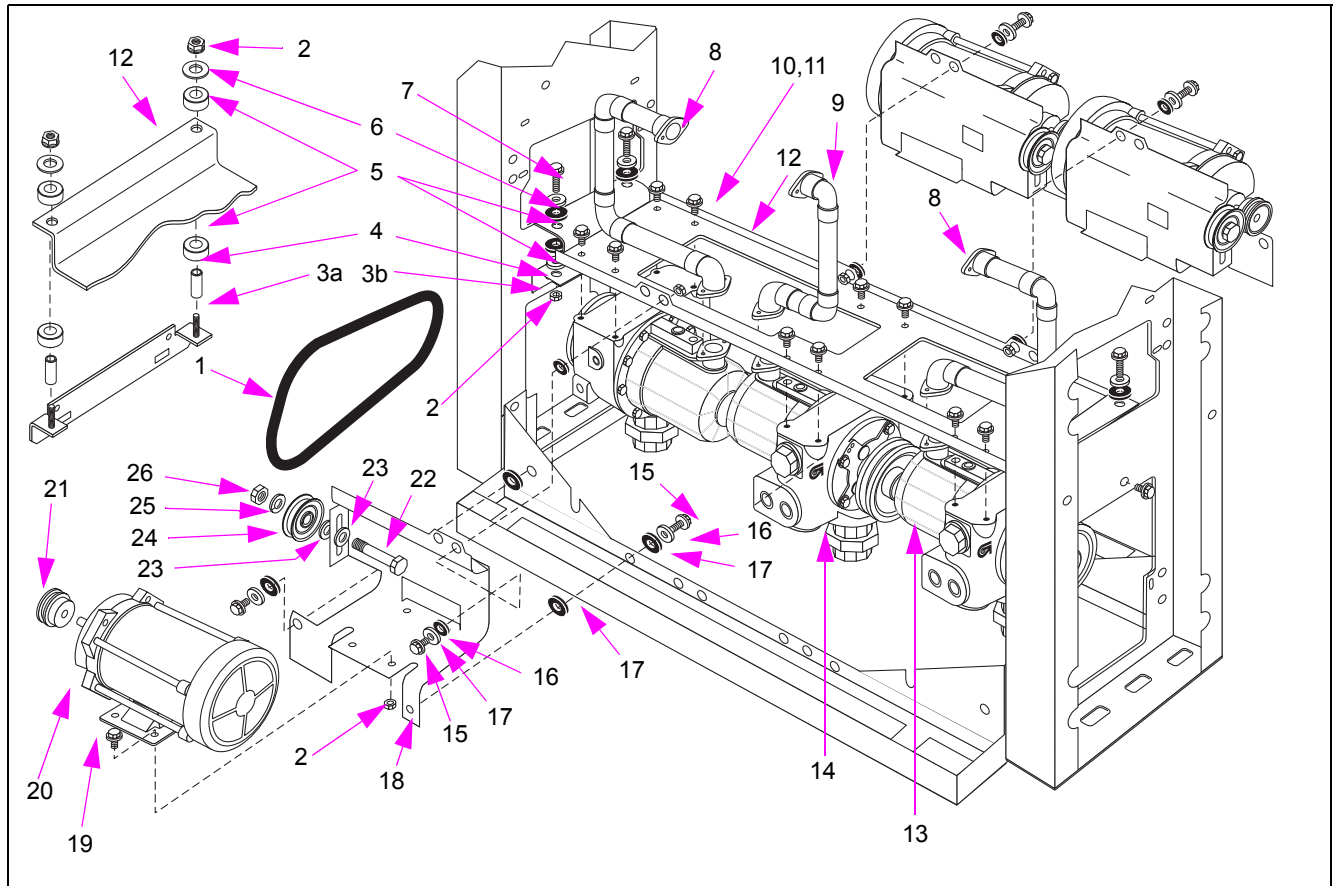


# 7 – Pumps and Meters Section

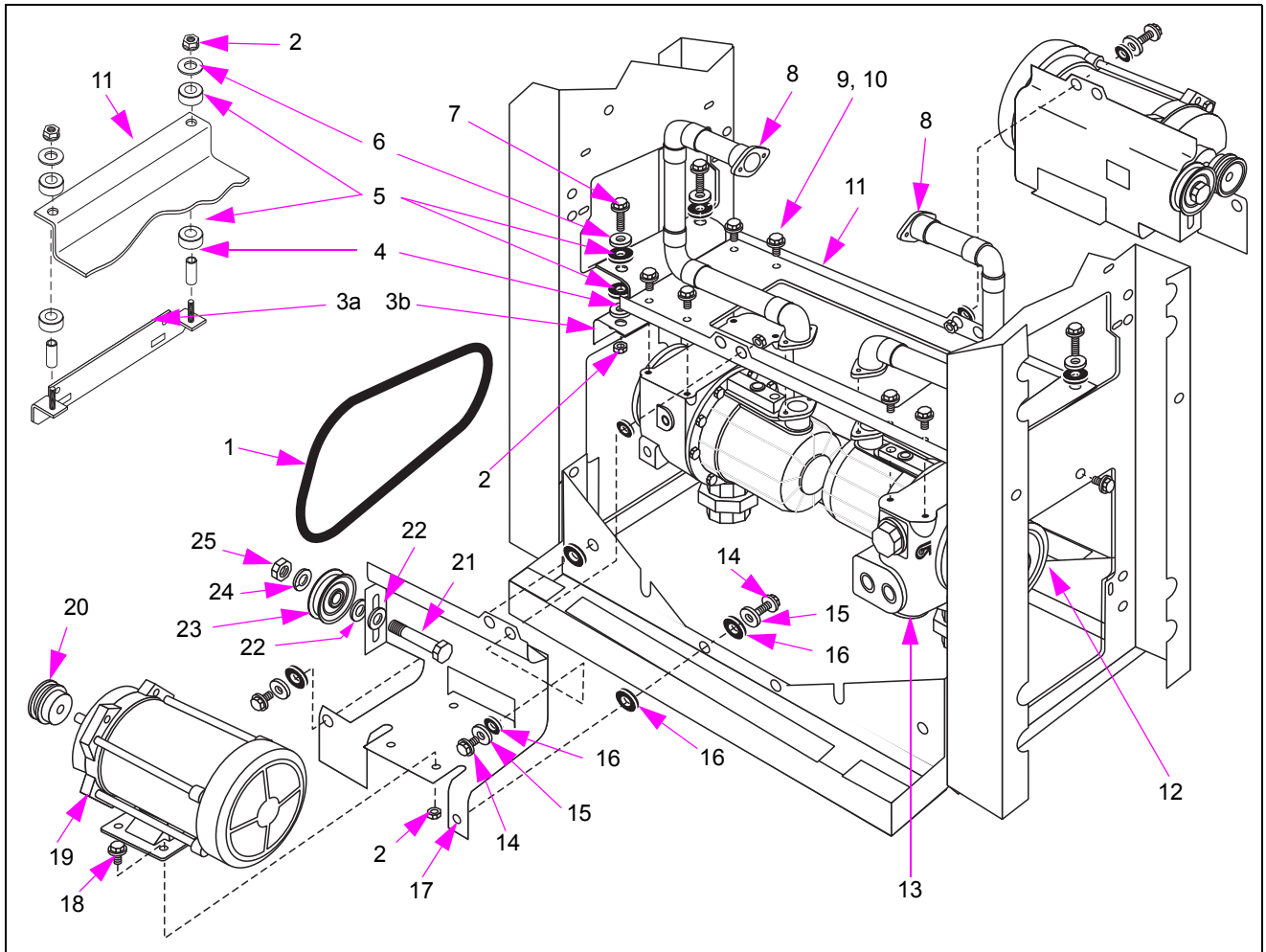
## Pump and Motor Support - 48-inch Frame



Item #	Part Description	Current Part	Previous Part	Quantity
1	V-belt, 26" (50 and 60 Hz models)	R06711-56	-	(see note 1)
2	Nut, 5/16-18	Q11890-05	-	(see note 1)
3	Bracket, Hydraulic Shelf			
3a	• Production Units Manufactured After November 1999	T18564-G1	-	2
3b	• Production Units Manufactured Before November 1999	T18564-G1	T18564-02	2
4	Spacer	K83676	-	4
5	Shockmount	K83674	-	8
6	Flat Washer (see note 5)	N16599-35	-	4
7	Bolt, 5/16-18 X 1-1/2"	K03239	-	4
8	Feedline Assembly (1 and 3-grades) (obsolete, see note 4)	-	T18941-G1	2
9	Feedline Assembly (2-grade) (see note 2) (obsolete, see note 4)	-	T18243-G1	1

Item #	Part Description	Current Part	Previous Part	Quantity
10	Bolt, 1/2-13 X 3/4"	K46809	-	(see note 1)
11	Lock Washer, 1/2"	K02455	-	(see note 1)
12	Support Plate, Pump (obsolete, see note 4)	-	T18562-01	1
13	Pulley, Pump (gerotor)			
	• 50 Hz, 3.75" O.D., 3.50" P.D.	R19678-39	-	(see note 1)
	• 60 Hz, 3.95" O.D., 3.70" P.D.	R19678-41	-	(see note 1)
14	Pump and Air Separator Assembly (refer to "Gerotor Pumping Unit" on page 7-10)	W03002-G26C	W03002-G10	(see note 1)
15	Screw, 5/16-18 X 3/4"	K85736-43	-	(see note 1)
16	Flat Washer	N16599-67	-	(see note 1)
17	Rubber Washer	K80671-24	-	(see note 1)
18	Support Bracket, Motor			
	In use after 9/93 (obsolete, see note 4)	-	W03111-01	(see note 1)
	Used before 9/93 (obsolete, see note 4)	-	W03111-01 W03111	(see note 1)
19	Bolt, 5/8-16 X 3/4" Long	Q10865-35	-	(see note 1)
20	Motor, 3/4 HP			
	• Single-phase 115/208-230 VAC (120/240 VAC for -03) 60 Hz, 1725 rpm, CCW	R14213-30	R14213-03	(see note 1)
	• Single-phase 115/230 VAC 50 Hz, 1425 rpm, CCW	R14213-05	-	(see note 1)
	• Three-phase 380 VAC 50/60 Hz, 1425/1725 rpm, CW or CCW	R14213-14	-	(see note 1)
21	Pulley, 3/4 HP Motor			
	• 60 Hz, 2.50" O.D., 2.30" P.D.	R18900-25	-	(see note 1)
	• 50 Hz, 2.80" O.D., 2.60" P.D.	R18900-28	-	(see note 1)
22	Bolt, 3/8-16 X 1-3/4"	K01904	-	(see note 1)
23	Flat Washer, 3/8"	K02206	-	(see note 1)
24	Idler Pulley, 3-1/16" O.D., 2" Bottom of Groove Diameter	N23342-02	-	(see note 1)
25	Lock Washer, 3/8"	K50775	-	(see note 1)
26	Nut, 3/8-16	K01943	-	(see note 1)
<b>Not Shown</b>				
-	Key, Motor Pulley	K83379-21	-	(see note 1)
-	Key, Pump Pulley	Q12697-02	-	(see note 1)
<b>Notes:</b> 1. Quantity varies with model. 2. Not used on MPD 2-grade pump. 3. All parts may not be available as spare parts. 4. No replacement. 5. Contact a Gilbarco representative before ordering part.				

# Pump and Motor Support - 36-inch Frames



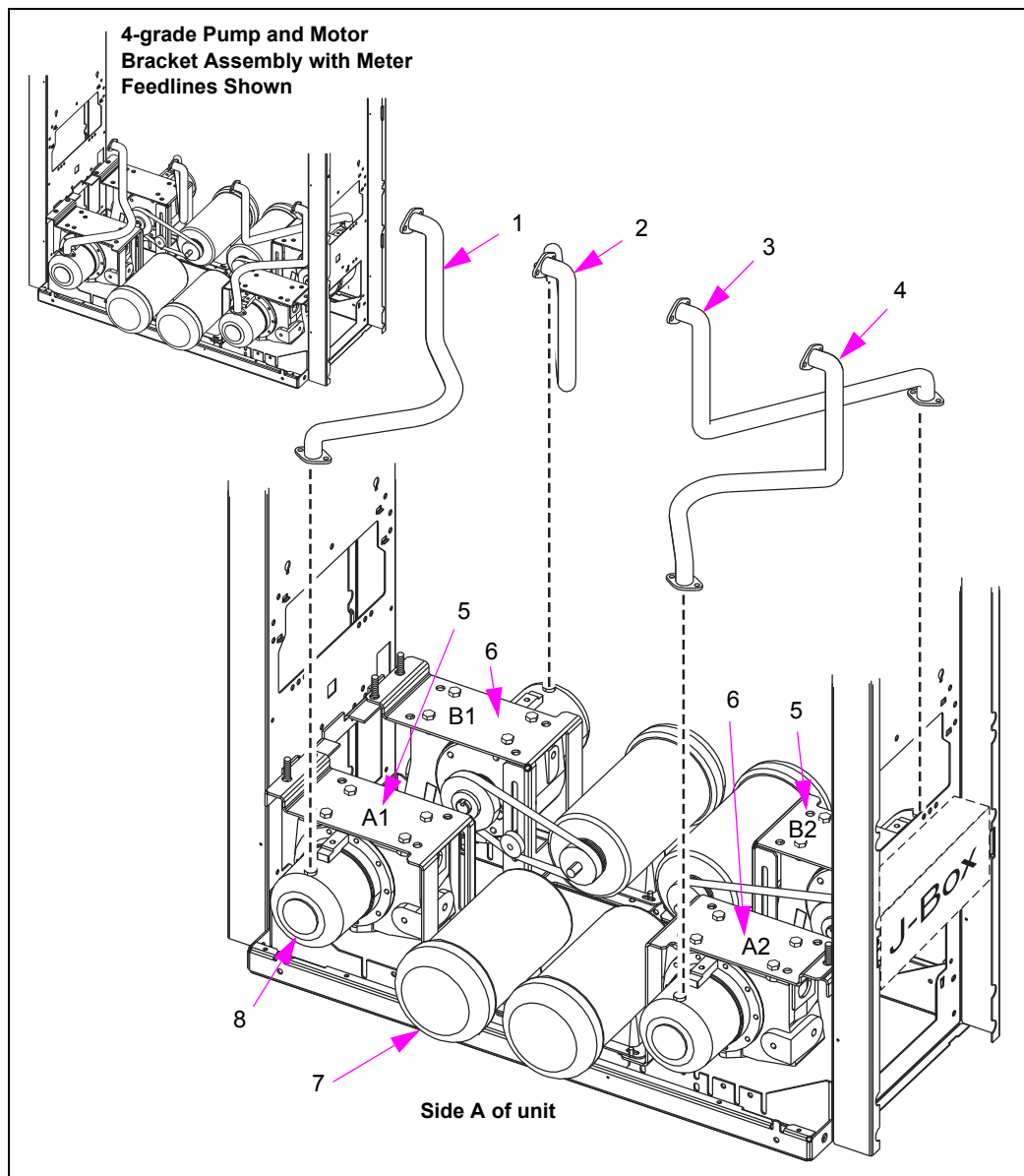
Item #	Part Description	Current Part	Previous Part	Quantity
1	V-belt, 26" (50 and 60 Hz models)	R06711-56	-	(see note 1)
2	Nut, 5/16-18	Q11890-05	-	(see note 1)
3	Bracket, Hydraulic Shelf			
	<ul style="list-style-type: none"> <li>• Production Units Manufactured After November 1999</li> <li>• Production Units Manufactured Before November 1999</li> </ul>	T18564-G1	-	2
		-	T18564-G1	2
4	Spacer	K83676	-	4
5	Shockmount	K83674	-	8
6	Flat Washer	N16599-35	-	4
7	Bolt, 5/16-18 X 1-1/2"	K03239	-	4
8	Feedline Assembly [Products 1 and 2 (Spare Parts Item)]	T18244-G1	-	(see note 1)
9	Bolt, 1/2-13 X 3/4"	K46809	-	(see note 1)

Item #	Part Description	Current Part	Previous Part	Quantity
10	Lock Washer, 1/2"	K02455	-	(see note 1)
11	Pump Support Plate	T18563-01	-	1
12	Pulley, Pump (W03002-G26C)			
	• 50 Hz, 3.75" O.D., 3.50" P.D.	R19678-39	-	(see note 1)
	• 60 Hz, 3.95" O.D., 3.70" P.D.	R19678-41	-	(see note 1)
13	Pump and Air Separator Assembly (refer to "Gerotor Pumping Unit" on page 7-10)	W03002-G17	W03002-G10	(see note 1)
14	Screw, 5/16-18 X 3/4"	K85736-43	-	(see note 1)
15	Flat Washer	N16599-67	-	(see note 1)
16	Rubber Washer	K80671-24	-	(see note 1)
17	Motor support bracket (no longer available) (obsolete, see note 3)	-	W03111-01 W03111	(see note 1)
18	Bolt, 5/16-18 X 3/4" long	Q10865-35	-	(see note 1)
19	Motor, 3/4 HP			
	• Single-phase 120/240 VAC 60 Hz	R14213-30	R14213-03	(see note 1)
	• Single-phase 115/230 VAC 50 Hz, 1425 rpm, CCW	R14213-05	-	(see note 1)
	• Three-phase 380 VAC 50/60 Hz, 1425/1725 rpm, CW or CCW	R14213-14	-	(see note 1)
20	Pulley, 3/4HP Motor			
	• 60 Hz, 2.50" O.D., 2.30" P.D.	R18900-25	-	(see note 1)
	• 50 Hz, 2.80" O.D., 2.60" P.D.	R18900-28	-	(see note 1)
21	Bolt, 3/8-16 X 1-3/4"	K01904	-	(see note 1)
22	Flat Washer, 3/8"	K02206	-	(see note 1)
23	Idler Pulley, 3-1/16" O.D., 2" Bottom of Groove Diameter	N23342-02	-	(see note 1)
24	Lock Washer, 3/8"	K50775	-	(see note 1)
25	Nut, 3/8-16	K01943	-	(see note 1)
<b>Not Shown</b>				
-	Key, Motor Pulley	K83379-21	Q13386-01	(see note 1)
-	Key, Pump Pulley	Q12697-02	-	(see note 1)

**Notes:**

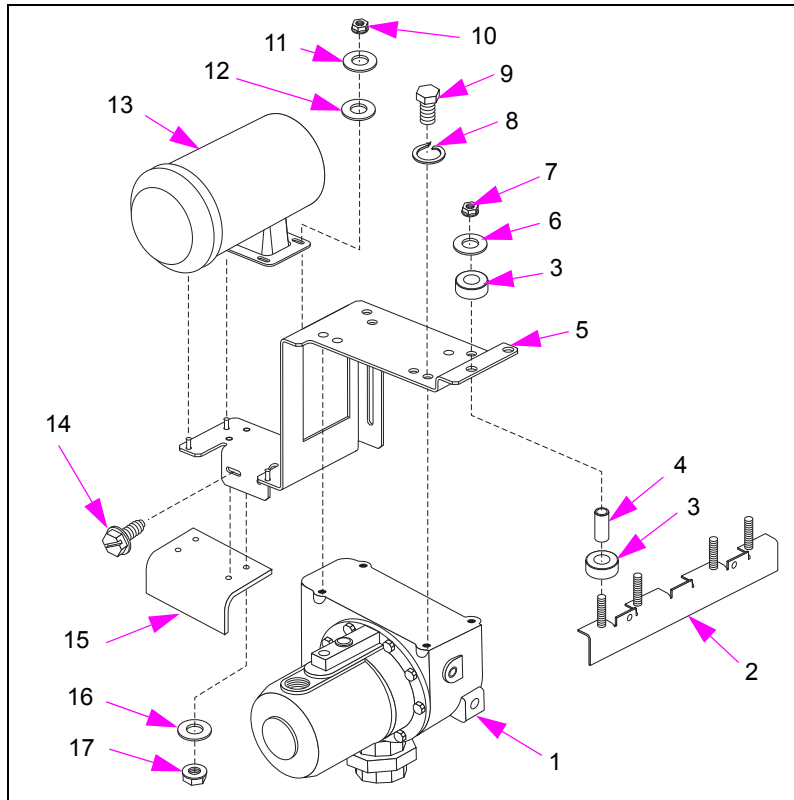
1. Quantity varies with model.
2. All parts may not be available as spare parts.
3. W03111-01 is obsolete and no replacement.

# Pump and Motor Assemblies - Four-grade Pump



Item #	Part Description	Current Part	Previous Part	Quantity
1	Feedline Assembly (#1)	T20315-G1	-	1
2	Feedline Assembly (#2)	T20308-G1	-	1
3	Feedline Assembly (#3)	T20351-G1	-	1
4	Feedline Assembly (#4)	T20352-G1	-	1
5	Support, Pump and Motor (A1 and B2 locations, refer to Illustration)	W03832-G1	-	2
6	Support, Pump and Motor (A2 and B1 locations, refer to Illustration)	W03832-G2	-	2
7	Motor Assembly, 3/4 HP (see notes 1 and 2)			
	• Single-phase 115/230 VAC 50 Hz, 1425 rpm, CCW	R20616-G1	-	4
	• Single-phase 115/230 VAC 60 Hz, 1725 rpm, CCW	R20616-G3	-	4
	• Three-phase 220/380 VAC 50/60 Hz, 1425/1725 rpm, CW or CCW	R20616-G4	-	4
	• Single-phase 115/230 VAC 50 Hz, 1425 rpm, CCW	R20617-G1	-	4
	• Single-phase 115/230 VAC 60 Hz, 1725 rpm, CCW	R20617-G3	-	4
	• Three-phase 220/380 VAC 50/60 Hz, 1425/1725 rpm, CW or CCW	R20617-G4	-	4
	• Single-phase 115/230 VAC 50 Hz, 1425 rpm, CCW	R20618-G1	-	4
	• Single-phase 115/230 VAC 60 Hz, 1725 rpm, CCW	R20618-G3	-	4
	• Three-phase 220/380 VAC 50/60 Hz, 1425/1725 rpm, CW or CCW	R20618-G4	-	4
	• Single-phase 115/230 VAC 50 Hz, 1425 rpm, CCW	R20619-G1	-	4
	• Single-phase 115/230 VAC 60 Hz, 1725 rpm, CCW	R20619-G3	-	4
	• Three-phase 220/380 VAC 50/60 Hz, 1425/1725 rpm, CW or CCW	R20619-G4	-	4
8	Pump and Air Separator Assembly (gerotor)	W03002-G26C	-	4
<b>Notes:</b> 1. Motor assembly includes conduit connection at motor. 2. Assemblies are not available. Purchase Motors (R14213-XX). 3. All parts may not be available as spare parts.				

## Pump and Motor Support - Four-grade Pump



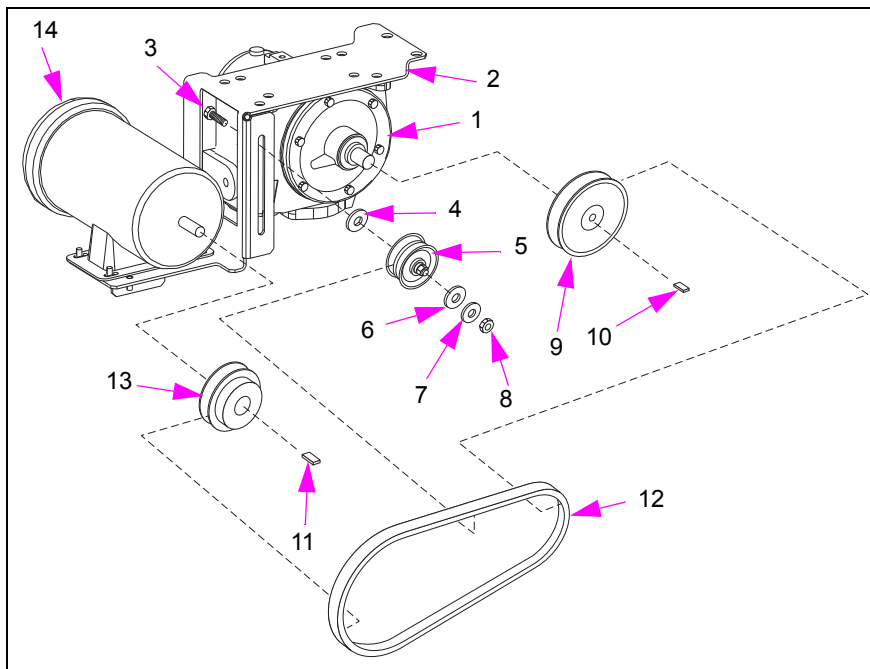
Item #	Part Description	Current Part	Previous Part	Quantity
1	Pump and Air Separator Assembly (refer to "Gerotor Pumping Unit" on page 7-10)	W03002-G26C	-	-
2	Support Bracket, Pump Shelf (shown for reference)	T20380-G1	-	-
3	Shock Mount	K83674	-	4
4	Spacer	K83676	-	2
5	Support, pump and motor (refer to "Pump and Motor Assemblies - Four-grade Pump" on page 7-5)	W03832-G1 (Left) W03832-G2 (Right)	-	2
6	Washer, Shock Mount	N16599-35	-	2
7	Nut, Serrated, Hexagonal Flange 5/16-18	Q11890-05	-	2
8	Lock Washer, 1/2" I.D.	K02455	-	4
9	Bolt, Hexagonal-head, 1/2-13 X 3/4" Long	K46809	-	4
10	Nut, Serrated, 5/16-18	Q11890-05	-	4
11	Washer, Flat, 5/16"	K42999	-	4
12	Washer, Rubber	K80671-24	-	4
13	Motor (refer to "Pump and Motor Assemblies - Four-grade Pump" on page 7-5)	R14213-XX (see note 2)	-	-
14	Bolt, Hexagonal-head, Thread Forming, 5/16-18 X 3/4"	K85736-43	-	2
15	Bracket, Pump Support Plate	N23909-G1	-	1

Item #	Part Description	Current Part	Previous Part	Quantity
16	Washer, Flat, 5/16	K42999	-	4
17	Nut, Serrated, Hexagonal Flange, 5/16-18	Q11890-05	-	4

Notes:

- Quantity in this table is for assembly shown. For complete assembly, refer to "Pump and Motor Assemblies - Four-grade Pump" on page 7-5.
- Motor Assembly (R14213-XX) is not available. Purchase Motors (R14213-XX).
- All parts may not be available as spare parts.

## Pulleys and Belts - Four-grade Pump



Item #	Part Description	Current Part	Previous Part	Quantity
1	Pump and Air Separator Assembly (refer to "Gerotor Pumping Unit" on page 7-10)	W03002-G26C	-	-
2	Support, Pump and Motor (see Items 5 and 6 on page 7-6)	W03832-GX	-	-
3	Bolt, 3/8"-16 X 1-3/4" Long	K01904	-	1
4	Lock Washer, 1/2"	K02455	-	1
5	Pulley, Idler, 3-1/16" O.D.	N23342-02	-	1
6	Flat Washer, 3/8"	K02206	-	1
7	Lock Washer, 3/8"	K50775	-	-
8	Nut, Hexagonal, 3/8"-16	K01943	-	1
9	Pulley, Pump			
	• Used with 3/4 hp, 60 Hz Motor, 3.95" O.D., 3.70" P.D.	R19678-41	-	1
	• Used with 3/4 hp, 50 Hz Motor, 3.75" O.D., 3.50" P.D.	R19678-39	-	1
10	Key, Pump, .25 X .25 X .625 Long	Q12697-02	-	1

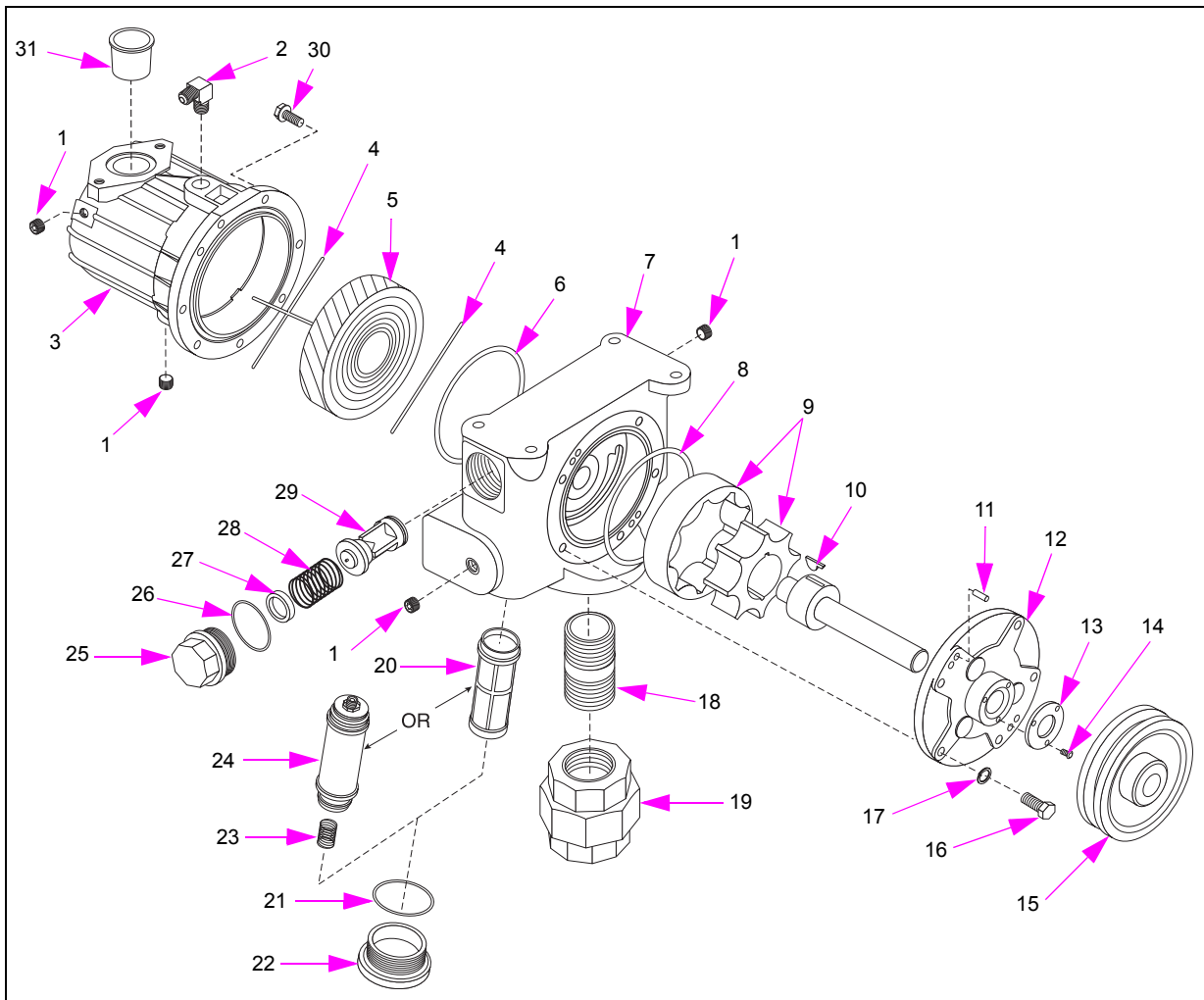


Item #	Part Description	Current Part	Previous Part	Quantity
11	Key, Motor, .25 X .25 X 1.25 Long	Q12697-01	-	1
12	V-belt, Pump and Motor			
	• Side A Right and Side B Left	R06711-39	-	2
	• Side A Left and Side B Right	R06711-54	-	2
13	Pulley, Motor			
	• 3/4 hp, 60 Hz, 2.50" O.D., 2.30" P.D.	R18900-25	-	1
	• 3/4 hp, 50 Hz, 2.80" O.D., 2.60" P.D.	R18900-28	-	1
14	Motor (see <a href="#">Item 7</a> on <a href="#">page 7-6</a> )	R14213-XX	-	-

**Notes:**

1. Quantity in this table is for assembly shown. Pulleys and keys are typical for The Advantage Series.
2. All parts may not be available as spare parts.

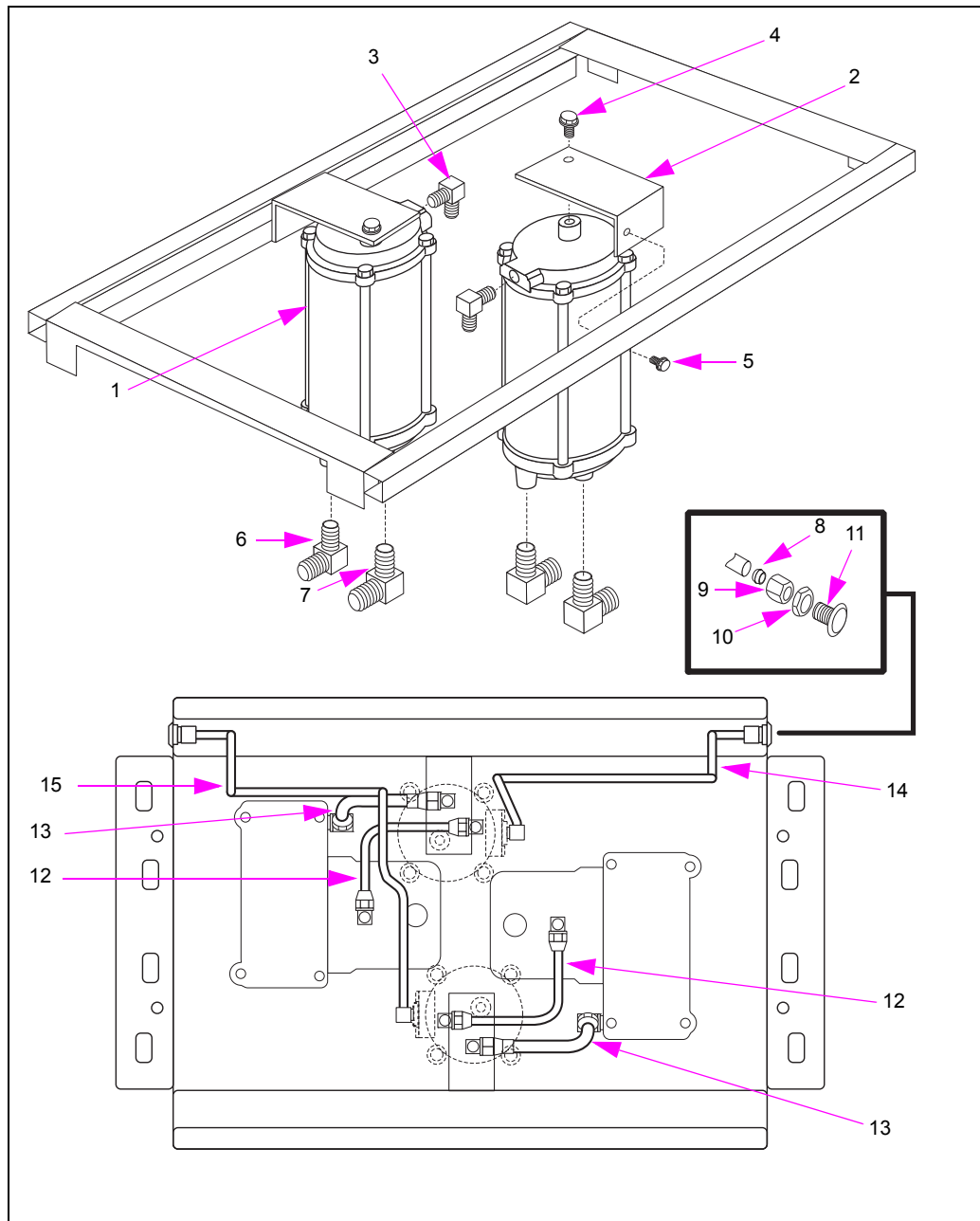
# Gerotor Pumping Unit



Item #	Part Description	Current Part	Previous Part	Quantity
1	Plug, 1/4"	K60756	-	4
2	Vent elbow	Q10001-12	-	1
3	Air separator body (1" discharge)	W03643-10	-	1
4	Filter Retainer	K82085-02	-	3
5	Separator Filter	K76193	-	1
6	Seal (lathe-cut)	Q12508-257	-	1
7	Pump body	W03001-G2	-	1
8	Seal (lathe-cut)	Q12508-251	-	1
9	Gerotor Gear Set	R19355-G1	-	1
10	Key	K93830	-	1
11	Dowel Pin	K41874	-	2
12	Head and Bearing Plate Assembly	T18759-G1	-	1
13	Seal, 1" shaft	N23196	-	1

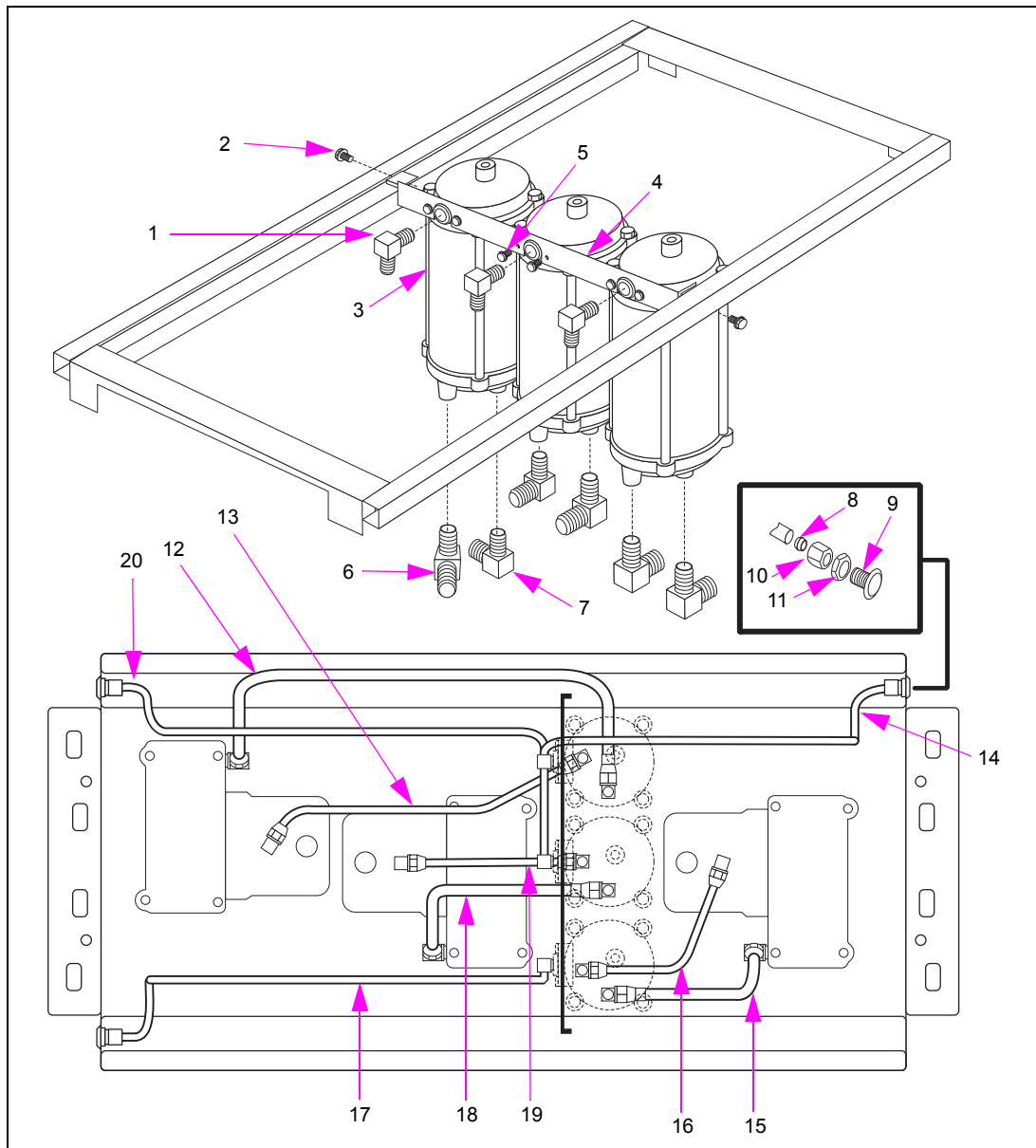
Item #	Part Description	Current Part	Previous Part	Quantity
14	Screw, 10-24 X 3/8	Q11560-105	-	3
15	Pulley, shown for reference (refer to "Pulleys and Belts - Four-grade Pump" on page 7-8)	-	-	1
16	Bolt, 3/8-16 X 1"	Q10412-07	-	5
17	Lock Washer, 3/8"	K50775	-	5
18	Pipe Nipple, 1-1/2" X 1-3/4"	R11493-77	-	1
19	Union, 1-1/2" 300 lbs. (Canada)	Q10846-08	-	1
20	Strainer	N18957	-	1
21	O-ring, 2-1/8 X 2-3/8 X 1/8"	Q10068-18	-	1
22	Strainer Cap	K45315E03	-	1
23	Retainer Spring (see note 3)	K93828	-	1
24	Strainer/Check Valve (see note 3)	PA0039A06	-	1
25	ByPass Valve Cap	K48169-04	-	1
26	O-ring, 1-3/4 X 2 X 1/8"	Q10068-15	-	1
27	Preload Spacer	K93530-03	-	1
28	Preload Spring	K93829	-	1
29	ByPass Valve	N23190	-	1
30	Screw, 5/16-18 X 7/8"	Q10865-01	-	10
31	Protective Plug, 1"	K78953-27	-	1
<b>Not Shown</b>				
-	Gerotor Pump and Air Separator Assembly			
	• Canada	W03002-G20	-	(see note 1)
-	Protective Disk, 1-1/2"	K84625	-	1
-	Protective Cap, 5/8-18"	K78953-43	-	1
-	Protective Plug, 3/8"	K78953-25	-	1
<b>Notes:</b> 1. Quantity varies with model. 2. All parts may not be available as spare parts. 3. Optional inlet check valve.				

# Sump Assembly - 36-inch Frames, 2 Product



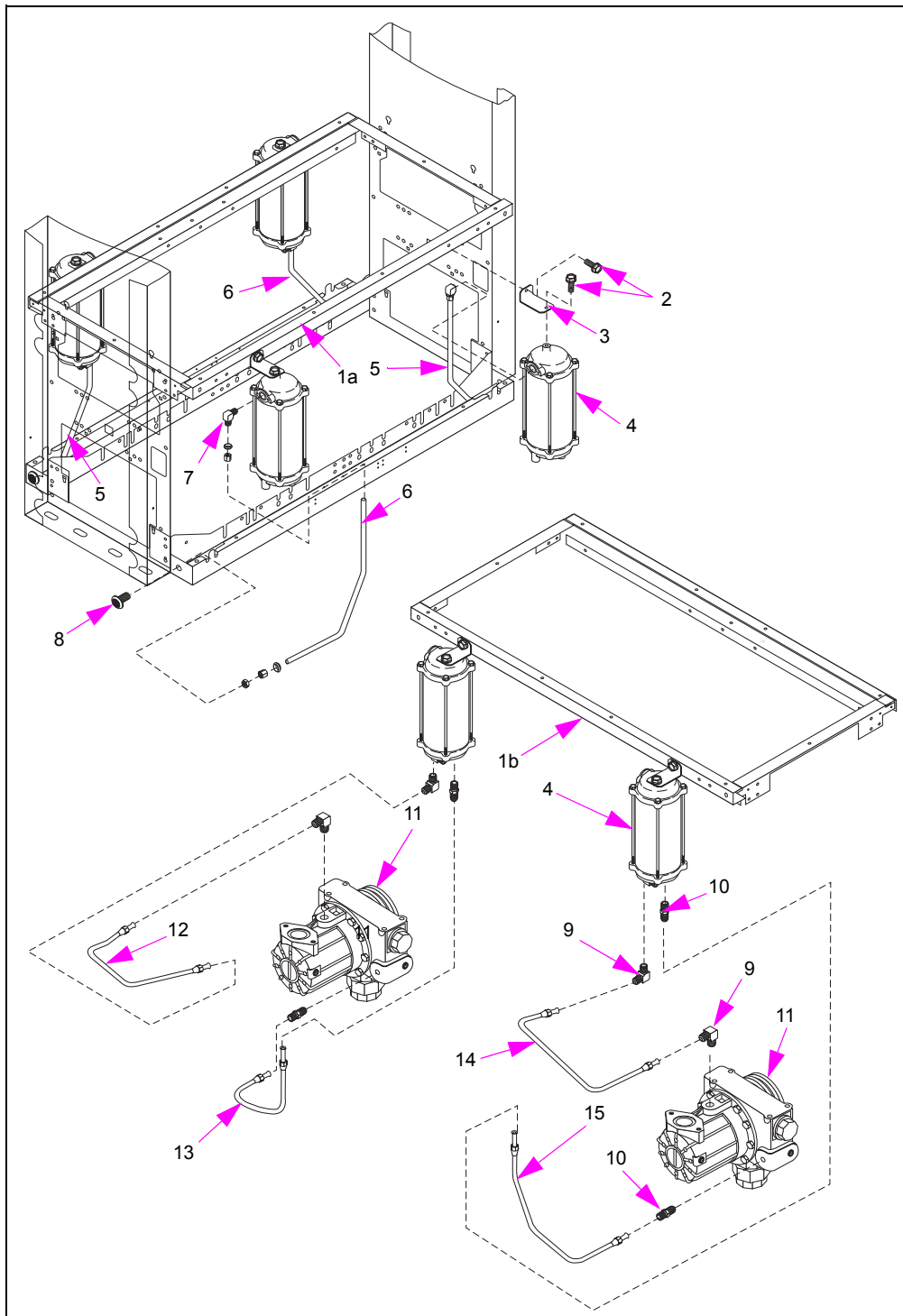
Item #	Part Description	Current Part	Previous Part	Quantity
1	Sump Assembly	PA0013-179	-	2
2	Sump Mounting Bracket (obsolete, see note 1)	-	N23426	2
3	Elbow Fitting, 3/8" X 90°	Q12503-01	-	2
4	Bolt, 3/8-16 X 5/8" (obsolete, see note 1)	-	K44046	2
5	Screw, 5/16-18 X 3/4"	K85736-43	-	2
6	Elbow Fitting, Flared, 3/8" X 90°	Q10001-12	-	2
7	Elbow Fitting, Flared, 1/2" X 90°	Q10001-20	-	2
8	Ferrule, Compression Fitting, 3/8"	K43260	-	(see note 2)
9	Nut, Compression Fitting, 3/8"	Q12505-01	-	(see note 2)
10	Nut, Hexagonal Check, 9/16-24"	Q10985-02	-	(see note 2)
11	Vent Fitting Assembly	N21861-02	-	(see note 2)
12	Inlet Tube Assembly, Product 1 and Product 2	R20300-G1	-	(see note 2)
13	Return Tube Assembly, Product 1 and Product 2	T19725-G1	-	(see note 2)
14	Vent Tube, Product 1	W03106	-	1
15	Vent Tube, Product 2 (obsolete, see note 1)	-	W03105	1
<p><i>Notes:</i></p> <p>1. No replacement.</p> <p>2. Quantity varies with model.</p> <p>3. All parts may not be available as spare parts.</p>				

# Sump Assembly - 48-inch Frames, 3 Product



Item #	Part Description	Current Part	Previous Part	Quantity
1	Elbow Fitting, 3/8" X 90°	Q12503-01	-	3
2	Screw, 5/16-18 X 3/4" (see note 1)	K85736-43	-	2
3	Sump Assembly	PA0013-179	-	3
4	Sump Mounting Bracket	R19472-01	-	1
5	Screw 1/4-20 X 1/2"	Q11889-02	-	6
6	Elbow Fitting, Flared, 3/8" X 90°	Q10001-12	-	6
7	Elbow Fitting, Flared, 1/2" X 90°	Q10001-20	-	6
8	Ferrule, Compression Fitting, 3/8"	K43260	-	(see note 1)
9	Vent Fitting Assembly	N21861-02	-	(see note 1)
10	Nut, Compression Fitting, 3/8"	Q12505-01	-	(see note 1)
11	Nut, Hexagonal Check, 9/16-24"	Q10985-02	-	(see note 1)
12	Return Tube Assembly, Product 1 (obsolete, see note 2)	-	T18234-G1	1
13	Inlet Tube Assembly, Product 1 (obsolete, see note 2)	-	T18233-G1	1
14	Vent Tube, Product 1 (obsolete, see note 2)	-	T18231-01	1
15	Return Tube Assembly, Product 3 (obsolete, see note 2)	-	T18238-G1	1
16	Inlet Tube Assembly, Product 3 (obsolete, see note 2)	-	T18237-G1	1
17	Vent Tube, Product 3 (obsolete, see note 2)	-	T18231-02	1
18	Return Tube Assembly, Product 2 (obsolete, see note 2)	-	T18236-G1	1
19	Inlet Tube Assembly, Product 2 (obsolete, see note 2)	-	T18235-G1	1
20	Vent Tube, Product 2 (obsolete, see note 2)	-	T18232	1
<b>Notes:</b> 1. Quantity varies with model. 2. No replacement. 3. All parts may not be available as spare parts.				

# Sump Assembly - Four-grade Pump





Item #	Part Description	Current Part	Previous Part	Quantity
1	Frame Members (shown for reference)			
1a	• Hydraulic Support Rail Shown with Unit Columns (a side of unit)			
1b	• Hydraulic support, shown Alone for Clarity (a side of unit)			
2	Screw, Cap, 3/8-16 X 1/2" long	Q11889-22	-	8
3	Bracket, Sump Mounting	R20615-01	-	4
4	Sump Assembly	PA0013-179	-	4
5	Vent tube, Sump, Right Side	T20346-01	-	2
6	Vent Tube, Sump, Left Side	T20345-01	-	2
7	Elbow, Compression Fitting, 3/8" X 90°	Q12503-01	-	4
8	Vent Fitting	N23927-01	-	4
9	Elbow, Flared Fitting, 3/8" X 90°	Q10001-12	-	8
10	Connector, Male Flare, 1/2"	Q10008-21	-	8
11	Pump and Air Separator Assembly (refer to <a href="#">"Gerotor Pumping Unit"</a> on <a href="#">page 7-10</a> )	W03002-G26C	-	4
12	Inlet Tube Assembly, Sump, (left side, facing unit)	N23890-G1	-	2
13	Return Tube Assembly, Sump, (left side, facing unit)	N23889-G1	-	2
14	Inlet Tube Assembly, Sump, (right side, facing unit)	R20609-G1	-	2
15	Return Tube Assembly, Sump, (right side, facing unit)	R20608-G1	-	2

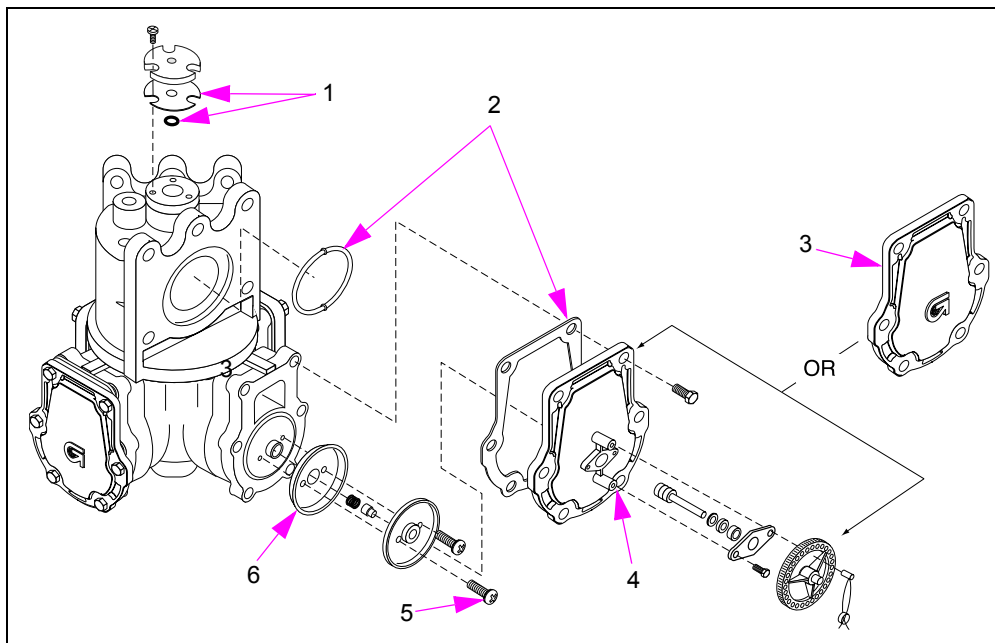
### C Meter (PA024xCxxxx)

The PA024xCxxxx model number can be any of the following:

• PA024NC03M	• PA024TC10	• PA024EC01
• PA024NC04M	• PA024TC11	• PA024EC02
• PA024NC10	• PA024TC20	
• PA024NC12B	• PA024TC21	
• PA024NC12M	• PA024TC22	
• PA024NC13	• PA024TC23	
• PA024NC14M	• PA024TC24	
• PA024NC20M	• PA024TC25	
• PA024NC35	• PA024TC26	
• PA024NC54	• PA024TC28M	
• PA024NC68M	• PA024TC30	
• PA024NC91M		
• PA024NC103M		
• PA024NC107		
• PA024NC108		
• PA024NC109M		
• PA024NC110B		

**Notes:**

1. When purchasing as a spare part, add S at the end of the part number.  
For example, PA024TC10S.
2. All parts may not be available as spare parts.



Item #	Part Description	Current Part	Previous Part	Quantity
1	Quad Ring Kit (shaft seals, gaskets, and alignment tools to service 10 meters)	K35222	-	1
2	Gasket and O-ring Kit (includes cover gaskets and o-rings, flange o-rings)	K35359	-	1
3	Cylinder Cover, Plain	N08028	-	1
4	Adjustment Screw and Cylinder Cover Assembly	N08086	-	1
5	Screw, 10-32 X 5/8", SST	Q11860-01	-	8
6	Piston Cup, Formed (see note 1)	N21252	-	4

**Not Shown**

-	Meter Check Valve Kit (includes check valve, o-rings, adapter) (see note 3)	K94254-01	-	1
---	-----------------------------------------------------------------------------	-----------	---	---

**Notes:**

1. Purchase Master Seal Kit (K96618) which includes N21252.
2. All parts may not be available as spare parts.
3. END 1747 Sealant, Loctite® 510, 250 ml Tube (enough to reseal connecting bars on 50 meters)